

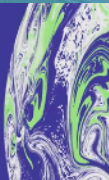
Carbon Baseline & Measuring

THE COMMERCIAL BUILDING SOLUTION

Supports

PSDS Funding Requirements

COP26



Local Authority
RACE TO ZERO



ZERO Carbon Places.org

A network to help local authorities achieve net zero carbon

UNLOCKING THE SOLUTIONS TO ACHIEVING ZERO CARBON.

ZERO Carbon Solutions is delighted to be able to support local authorities on their journey to meet their climate declarations and become net zero carbon.

We have launched the **Local Authority RACE TO ZERO**, which will provide workable solutions for a community of local authorities to share both their ideas and successes to help reach net zero carbon.

Has your local authority joined the RACE TO ZERO?

This brochure provides the solution to calculate the carbon baseline of all your non domestic buildings and then measure the monthly carbon reductions being achieved.

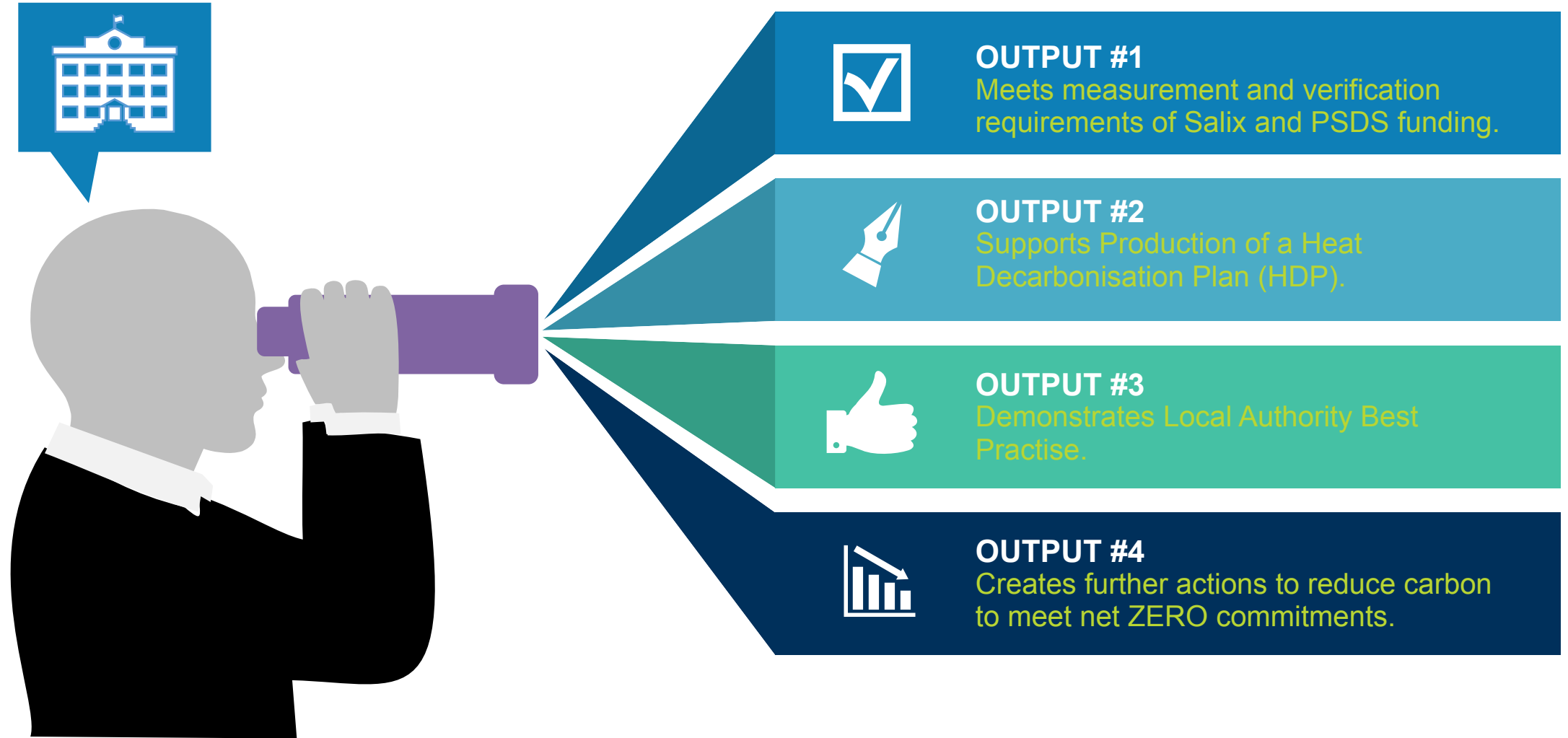
Local Authority
RACE TO NET ZERO



ZERO Carbon Places.org

A network to help local authorities achieve net zero carbon

Our Carbon Baseline Service Has Four Outputs



ZERO Carbon Places has created a unique package that supports local authorities carbon baseline and measure the monthly carbon emissions of their non-domestic buildings. This meet PSDS funding requirements and demonstrates good practices.

Our partnership with CBN Expert and their sophisticated carbon emission measuring software, and Asset Utilities as our delivery partner means that local authorities can now view **in real time** each building's carbon performance on its own dashboard.

The results are illustrated utilising four metrics.

Metric #1 : AMOUNT OF CARBON REDUCED - this demonstrates the carbon emissions compared to the last period, which could be month, calendar year or financial year.

Metric #2 : INTENSITY METRICS - is the carbon emitted per unit of activity and is required for carbon reporting. Each building has its own customised dashboard and can group buildings (such as schools) together to show collective results.

Metric #3 : ENERGY - measuring how much has been reduced since the last period.

Metric #4 : TRANSPORT - shows the amount of carbon produced for the amount of goods and services provided.



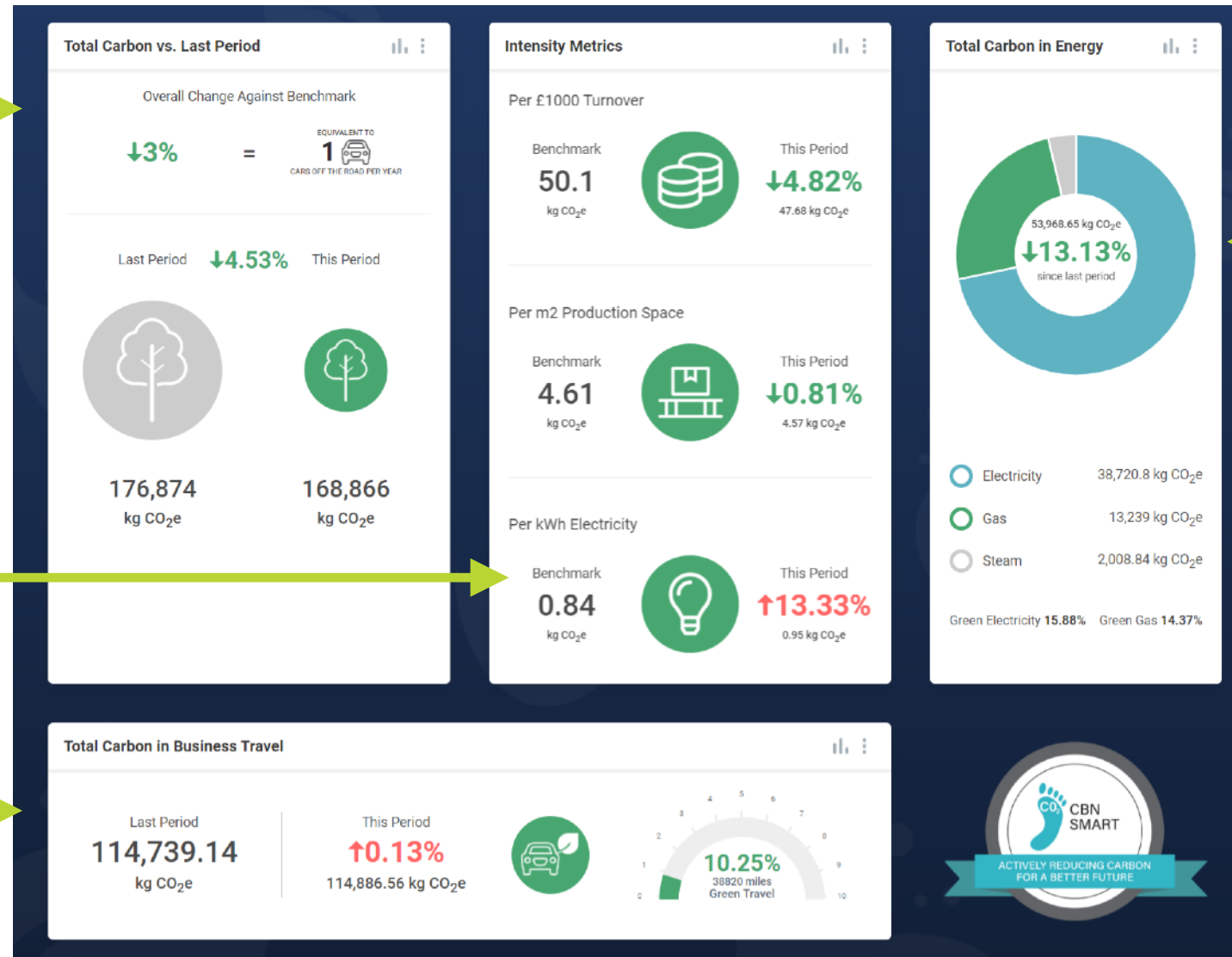
THE DASHBOARD and the Four Metrics

Metric #1 :
AMOUNT OF CARBON REDUCED

Metric #2 :
INTENSITY METRICS

Metric #4 :
TRANSPORT

Metric #3 :
ENERGY



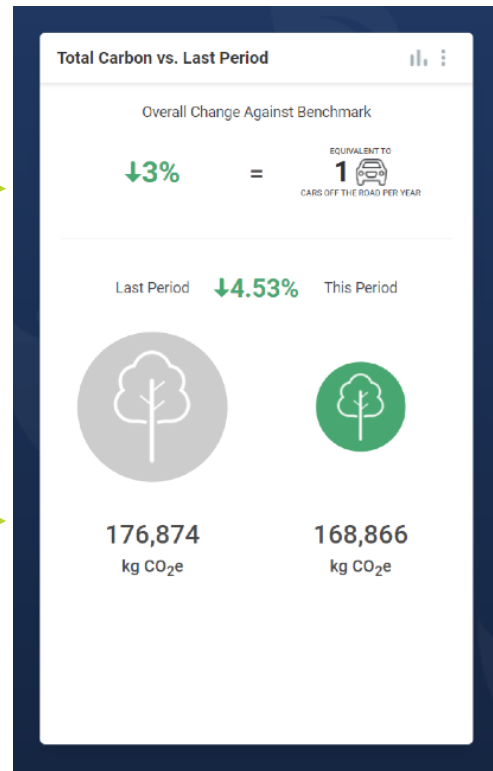
THE DASHBOARD EXPLAINED

The customised dashboard shows the carbon emission performance for each building using four metrics.

Metric #1 : AMOUNT OF CARBON REDUCED - this demonstrates the carbon emissions compared to the last period, which could be month, calendar year or financial year.

Shows the carbon reduction against your benchmark

This represents the carbon emissions for the last period, which could be previous month or year



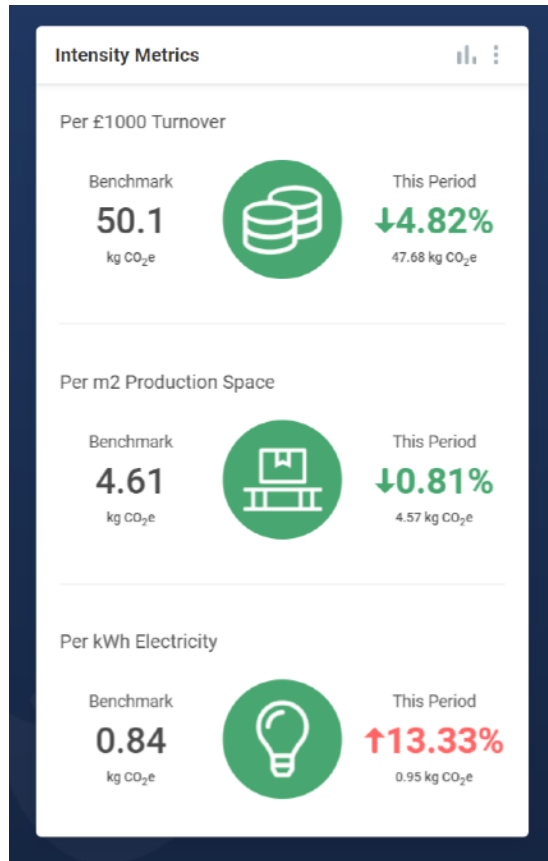
As no one knows what a tonne of carbon looks like, the reduction is expressed in cars taken off the road.

This is the last month's performance and if 'green' represents a carbon emissions decrease. The footprint icon will appear larger and red if emissions increase.



THE DASHBOARD EXPLAINED

Metric #2 : INTENSITY METRICS - is the carbon emitted per unit of activity and is required for carbon reporting.



This image shows 3 units of activity to measure carbon emissions - per employee, per m2 Office Space and per m2 Production Space.

There are actually 9 units that can be used to measure carbon emissions, which can be chosen to compare different results.

Results can be expressed in kg CO₂e or tonnes CO₂e

The configuration panel for 'Intensity Metrics' allows users to select up to 3 units of activity. The available units are: Per Employee, Per Pupils, Per £1000 Turnover, Per m2 Office Space, Per m2 Production Space, Per kWh Electricity, Per kWh Gas, Per Road Mile - Car, and Per Road Mile - HGV/Van. The 'Set Against' section offers two options: 'Last Period' (selected) and 'Benchmark'. The 'Unit' section offers two options: 'kg CO₂e' (selected) and 'tonnes CO₂e'.

Intensity Metrics
Select up to 3

- ☒ Per Employee
- ☐ Per Pupils
- ☐ Per £1000 Turnover
- ☒ Per m2 Office Space
- ☒ Per m2 Production Space
- ☐ Per kWh Electricity
- ☐ Per kWh Gas
- ☐ Per Road Mile - Car
- ☐ Per Road Mile - HGV/Van

Set Against

☒ Last Period ☐ Benchmark

Unit

☒ kg CO₂e ☐ tonnes CO₂e

THE DASHBOARD EXPLAINED

Metric #3 : ENERGY - measuring how much has been reduced since the last period.

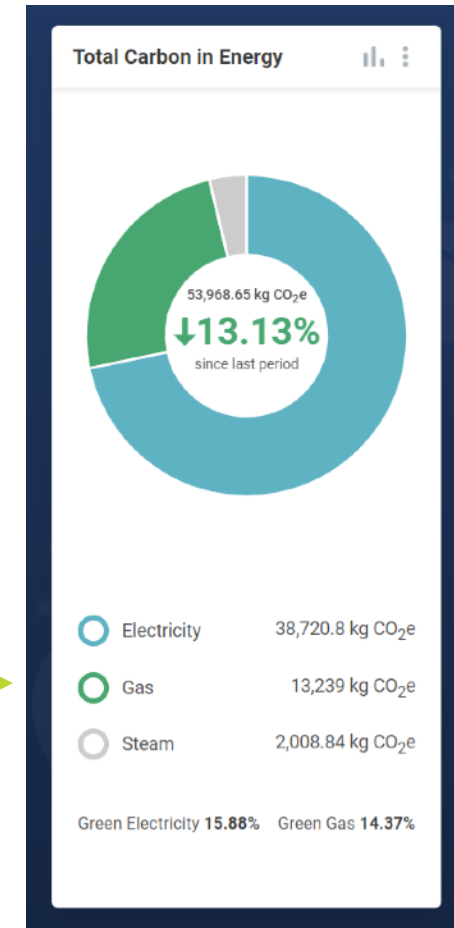
The results compared to the last period.



How carbon emissions are divided between the energy sources.

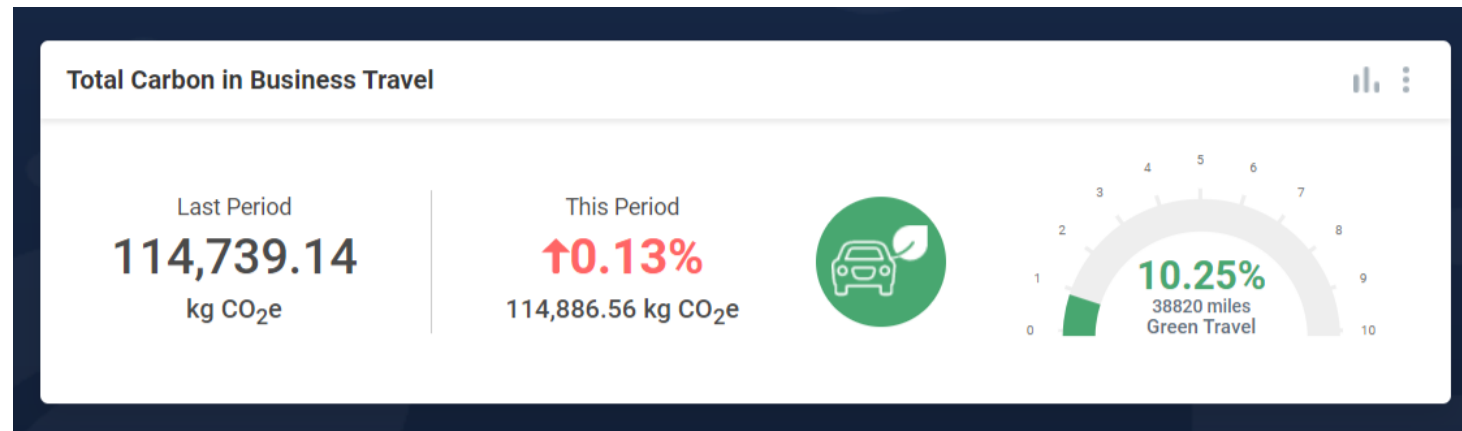


The percentage of purchased electricity and gas from green sources.



THE DASHBOARD EXPLAINED

Metric #4 : TRANSPORT - shows the amount of carbon produced for the amount of goods and services provided.



Performance against previous period.

The percentage of miles completed by green vehicles.

Other Key Benefits Of Our Service

BENEFIT #1 - Grouped Building Performance

As well as individual buildings results, groups of buildings (such as schools) can be grouped together to assess the overall performance for that sector.

BENEFIT #2 - Building Awards

On the dashboard, each building will receive an award when it reduces it's carbon emissions as follows :

Bronze is a 10% carbon reduction, Silver 20%, Gold 30% and Platinum a 50% reduction.



BENEFIT #3 - Building Accreditation and Certificate

Each building will receive an official accreditation in the form of a certificate that the local authority can frame and hang in a prominent place to promote the carbon emission reductions achieved.

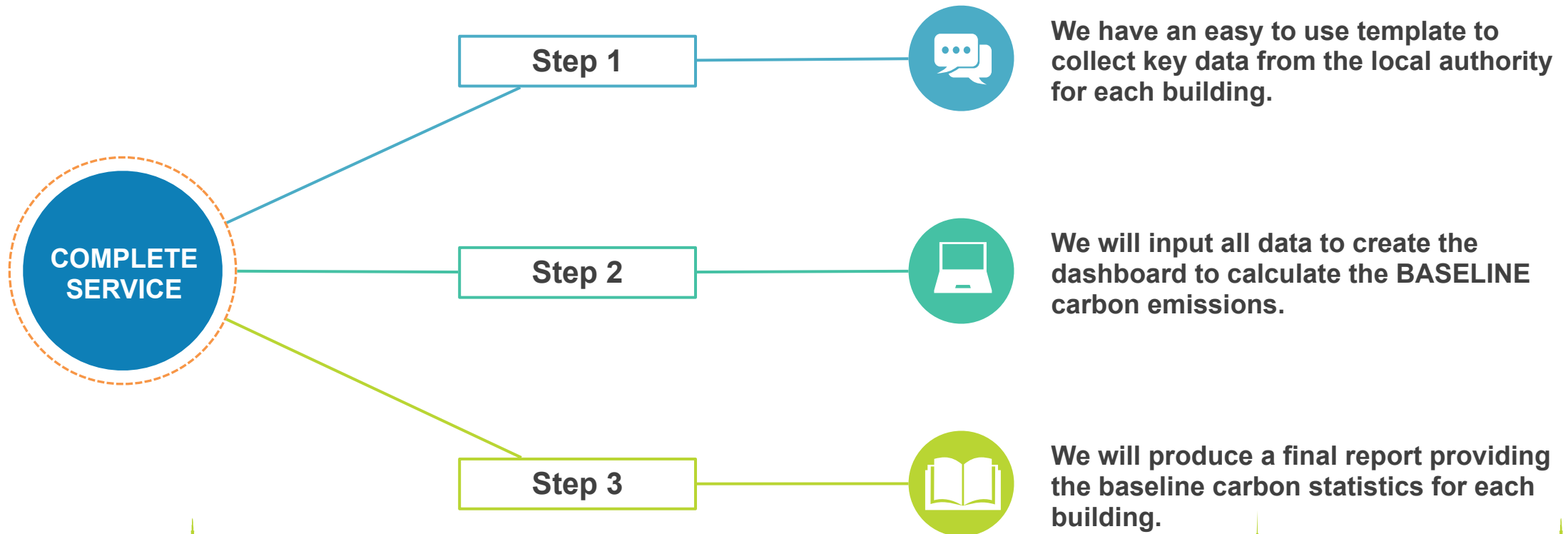
This is issued annually.



We Offer A 3-Step Service

We have created an efficient 3-step service that completes all the work for the authority, that is delivered by our partner Asset Utilities. The local authority benefits from :

- All data inputting and calculations for the baseline are completed for them
- The dashboard is set up so the local authority can manage the results for each building's carbon emissions monthly A report
- A report is provided providing all the baseline carbon statistics



Additional Online Training

Once the dashboard is set up, the local authority has access to a complete online training from a video series produced by CBN Expert.

Furthermore, Asset Utilities is on hand to support you with carbon queries to improve your carbon reduction journey.

DATA ENTRY



DEALING WITH MULTIPLE SITES



HOW TO SIGN IN

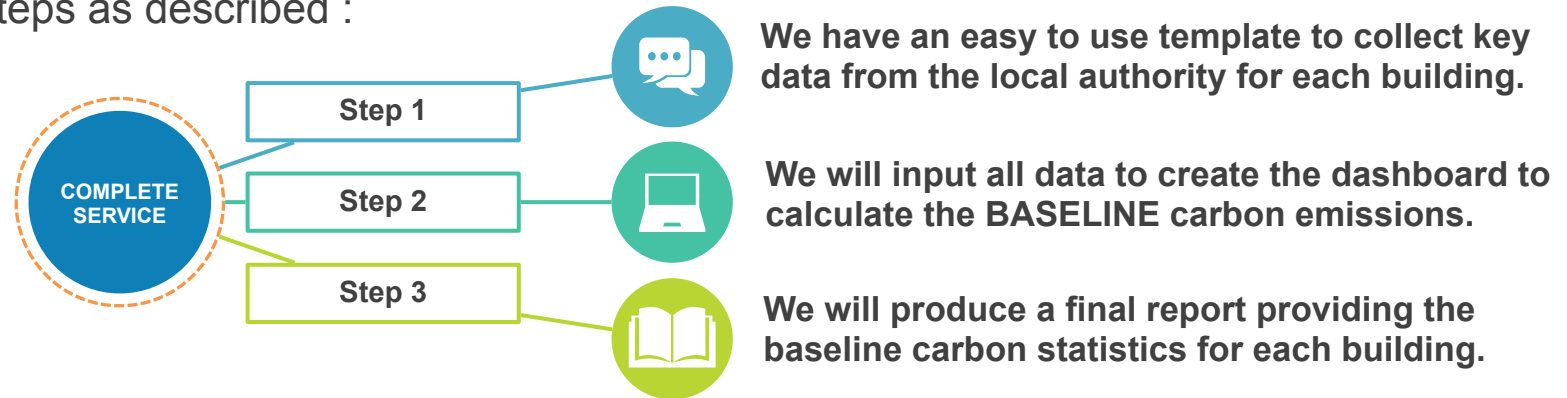


HOW TO USE THE DASHBOARD



Cost Of The Complete Service

Asset Utilities will complete the 3-steps as described :



The local authority can choose one of the following two services :

	Cost Of the Complete Service
Year 1 Cost	£395 plus vat per building , includes a 10% discount for ZERO Carbon Place members Discounted cost is available for multiple buildings
Included in the cost	<ul style="list-style-type: none">• 3-step set up process as described• 12 months software subscription with CBN Expert• End of year Carbon Reduction Certificate
Year 2 Cost (Optional)	£285 plus vat per building and includes : <ul style="list-style-type: none">• 12 months software subscription with CBN Expert• End of year Carbon Reduction Certificate Discounted cost is available for multiple buildings





North Ayrshire Council
Comhairle Siorrachd Àir a Tuath



Nottingham
City Council



ROYAL BOROUGH OF
WINDSOR &
MAIDENHEAD
WWW.WINDSOR.GOV.UK



Some of our key clients include :

NEXT STAGE

Please feel free to contact us to discuss your requirements.

We are also able to prepare a quotation to demonstrate how our services can meet your carbon and energy reduction aspirations.

Please contact :

Marc Wynn

marc@assetutilities.com
07798 646 936

Thank You



ZERO Carbon Places.org

A network to help local authorities achieve net zero carbon