

# WORKSHOP

## Climate Emergency

### Setting Out a Road Map to **ZERO** Carbon

Passing a climate emergency resolution is just the first step on the road to reducing CO<sub>2</sub> emissions to net zero by 2030. To succeed local authorities will need to deploy all of the resources at their disposal.

The purpose of this workshop is to start the process of building capacity to deliver on this challenging agenda. It aims to gain collective buy in and focus on key priorities and deliverables, identify challenges and opportunities and set out your own road map to net zero carbon.

**The workshop looks at the crucial role of municipal energy as a catalyst for the change to zero carbon and adopts a total place approach to the energy transition.**

**This workshop is for:**

- Local Authority Corporate/Senior Management Teams
- Elected Members and Portfolio Holders
- Climate Change and Sustainability Officers





## Workshop : Setting Out a Road Map to **ZERO** Carbon

### INTRODUCTION

So, your council has passed a climate emergency resolution and you now need to put in place the building blocks to get to net zero carbon by 2030.

It is the single greatest challenge facing local authorities today and requires long-term leadership, building capacity, deploying resources and effective co-ordination across the public, private and community realms if you are going to succeed.

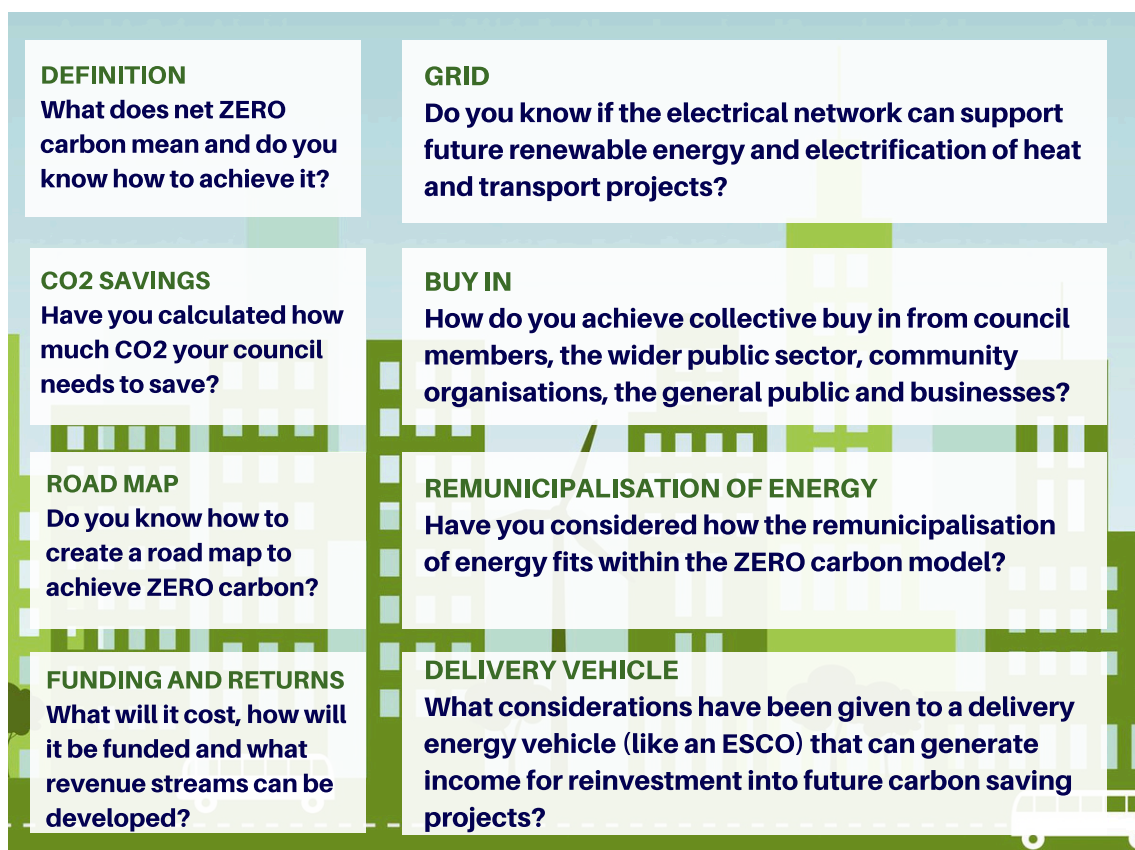
Most local authorities are not yet in a position to match their ambitions with concrete actions to achieve zero carbon and yet 2030 is only just over 10 years away! It is going to need a step change in delivery to make net zero carbon a reality.

Remember, this is about much more than specific actions to reduce CO<sub>2</sub> emissions across your own estate. It requires a **TOTAL PLACE** approach that considers all environmental, economic and social activity within the local authority area and an understanding of the energy profile of the area including and the power distribution network, heat, transport, energy demand reduction, efficiency and generation together with opportunities for climate mitigation.

**This is the vision for remunicipalisation as the catalyst for energy transition.**

This workshop is designed to help elected members and corporate management start the process of developing a road map to achieving zero carbon.

### QUESTIONS TO CONSIDER





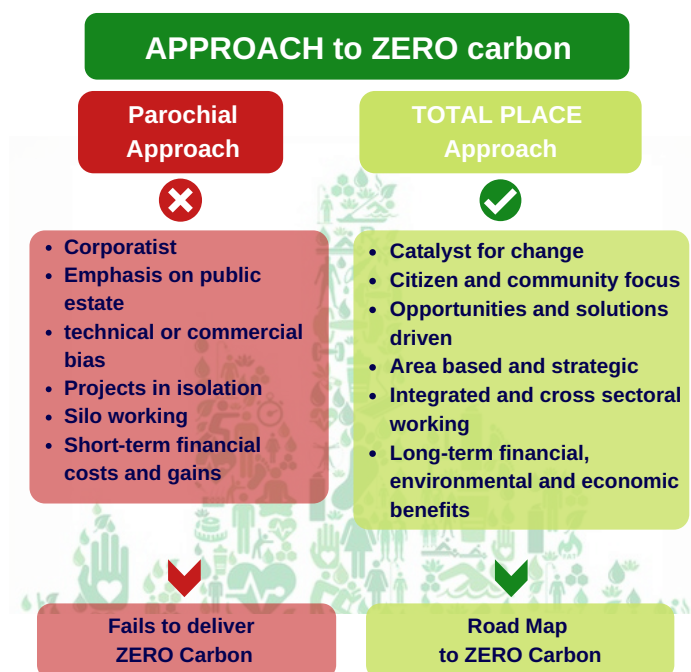
### OUR APPROACH

Our approach to getting to net zero carbon is significantly different to many others currently being promoted and incorporates best practice from local authorities at the forefront of the energy transition in the U.K. and across Europe.

It starts with an understanding of **TOTAL PLACE** and builds a **ROAD MAP** that incorporates remunicipalisation of energy to create a coordinated approach that delivers the local authority's ZERO CARBON ambitions.



This level of joined up thinking is the only way an authority can deliver net zero carbon that incorporates the support and shared vision from public, private and community realms. This allows local authorities to utilise their local stewardship role and wellbeing powers to mobilise all the local resources necessary to decarbonise the energy system.



This allows local authorities to drive forward their ambitions by taking a whole area approach, which defines our structured road map to zero carbon. This is about leadership, democratic engagement, communities, ownership, investment, local economies, partnership, innovation, environmental stewardship and project delivery. Using the critical mass of the local public sector as a catalyst for long-term change in our energy system.



### WORKSHOP APPROACH

One of the biggest problems with strategic planning is that the plan fails to be implemented because it is too high level and is not supported by clear delivery plans. This workshop through expert facilitation and action planning will help you to define your journey and set out a road map for you to achieve your ambitions.

Through structured and interactive elements, the workshop will take you through the main stages of delivering the road map.

Prior to the workshop, a questionnaire will be provided which focuses the authority on their key deliverables, assets and challenges. This allows the workshop to build on the priorities for the council.

#### ELEMENT 1: Strategies, Policies and Plans



- Set out your strategic goals
- Defining responsibility for delivery
- What resources do you currently have and what do you need?
- Who are the effective delivery agents in your area and who are your partners?
- Democratic and community involvement - developing a public engagement strategy

#### ELEMENT 2: Setting a baseline and understanding the CO2 'Gap'



- Have you got the data?
- What does the data tell you and what are the gaps'?
- Do you have a full picture of all 'energy and assets' related activity in your area (i.e. power, heat, transport etc.)?
- Do you understand the grid and power network. What are the capacities and constraints?
- Working with other agencies and organisations to plan for the future





## Workshop : Setting Out a Road Map to **ZERO** Carbon

---

### ELEMENT 3: Assessing priorities and appraising the options



- Identifying the most effective interventions which will cut CO<sub>2</sub> emissions and deliver the required energy needs of the area through additional generation, demand reduction etc.
- Case studies of best practise from UK and Europe
- Working out the quick wins – what can be done within the existing resource envelope which will have immediate impact?
- Identifying the most effective local interventions i.e. large scale retrofit, smart grids, heat networks, local generation and electrification of transport.
- Developing and ranking the options for delivery and their costs/benefits

### ELEMENT 4: Business cases and delivery vehicles

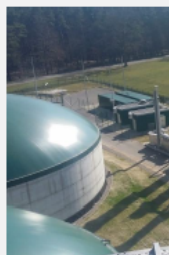


- Assessing different delivery models i.e. ESCOs, partnerships, direct, community and private sector delivery.
- Financing investments and borrowing. What is the most cost effective approach? e.g. public sector investment, private investment, crowdfunding, concession/utility payments etc.
- Local economic, environmental and social benefits – building supply chains, employment, training, growth and community well being

### ELEMENT 5: Delivering a road map



- Producing a road map with timescales and milestones.
- Governance and democracy issues – Local authority, local authority and partners, local authority and communities.
- Resources and finance.
- What next – What do we need to do by when?







## Workshop : Setting Out a Road Map to **ZERO** Carbon

---

### WORKSHOP COSTS

The workshop is designed initially as an intensive one-day structured event but can be adapted to meet specific requirements. The inclusive cost of delivery by expert facilitators is £1,750 plus vat. This cost includes a bespoke delivery framework for your council using the elements set out above, together with external facilitation and all relevant presentations, training materials and information.

The key outputs from the workshop will be:

- An outline road map and action plan to reach net zero carbon within a defined timescale.
- An understanding of the challenges and constraints which could impact on achieving your targets.
- Setting out priorities for action and the main opportunities available to your council for achieving your aims.
- Understanding the wider context of place and the role of remunicipalisation of energy.

The local authority is to provide training facilities/workshop room(s), AV and printing, refreshments and lunch for participants.





## Workshop : Setting Out a Road Map to **ZERO** Carbon

---

### YOUR WORKSHOP FACILITATORS



#### **Marc Wynn**

Marc is the Managing Director of Asset Utilities Ltd, which is specialist consultancy working exclusively for local authorities. Marc provides specialist energy strategy advice that includes grid services.

Asset Utilities was formed in 2007 to provide grid connection services that unlocked 'asset payments' for residential developers.

The company evolved to focus on working with local authorities providing grid connection work initially for solar PV farms. This expanded to battery grid connection services and energy strategy.

The company has made over 31,000 grid connections, saving its clients over £31 million in grid connection costs.

To support local authorities, the G1 Group was formed to provide its 51 members with free events to support energy projects, whilst creating learning and networking opportunities.

Asset Utilities for ethical and moral reasons, is focussed on supporting authorities reach their zero carbon goals.



#### **Mark Bramah**

Mark is the Managing Consultant with Municipia a local authority management consultancy. He specialises in local sustainable energy solutions and the municipalisation of energy services.

Mark was instrumental in setting up the U.K.'s first local authority energy collaboration APSE energy in 2014 involving over 60 local authorities with the aim of remunicipalising energy services.

He has worked on a number of projects including providing support to Robin Hood Energy, Nottingham City Council's wholly owned not for profit energy supply company; due diligence on energy storage projects; Local network/grid analysis including the policy and regulatory environment.

Mark also brings a perspective which involves using a comparative assessment of municipal energy models across Europe and their applicability to the U.K.

He is an accomplished presenter and trainer and has provided training modules for local authorities and elected members over a 35- year career in local government.

Mark is a member of the Renewable Energy Association (REA) and the Town and Country Planning Association (TCPA)

#### **Contact Information**

email : [marc@assetutilities.com](mailto:marc@assetutilities.com)  
mobile : 07798 646 936  
web : [www.assetutilities.com](http://www.assetutilities.com)

#### **Contact Information**

email : [mark@municipia.co.uk](mailto:mark@municipia.co.uk)  
mobile : 07858 465 003  
web : [www.municipia.co.uk](http://www.municipia.co.uk)

**To discuss your bespoke requirements, please contact either of the facilitators.**

# LOCAL AUTHORITY CLIENTS



North Ayrshire Council  
Comhairle Siorrachd Àir a Tuath

